

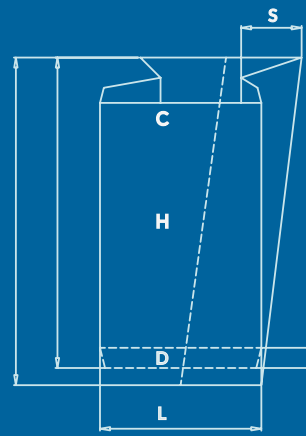


# ABOUT **PRAKASH**



Welcome to Prakash Group of Industries where you can see and judge yourself about the latest development in paper bag technology and quality of the machine. We feel pleasure to introduce ourselves as one the leading manufacturers of paper bag machines in various cut off and sizes in India. You will not only find the broadest product range offered by any one manufacture but also numerous technical highlights which open up new dimensions in the industry. The company is well capable to meet the growing demand of **Paper Bag Industry**.

**Prakash established** a ultra modern Hi-Tech manufacturing plant and all the components (**i.e. Main frames, Shafts, Rubber rollers, Cylinders, Bushes etc.**) are built in its own factory by a highly skilled team of engineers using most up to date manufacturing method guaranteeing consistent quality and finish. All of our paper bag machines are built entirely in our in-house state of the art production facilities. From Boring to cylinder grinding our large investment allows us to produce parts that meet the exacting standard required to build a precision paper bag machines. Our promise to you, the customer, is simple “Nothing runs like our Machines”.



## PBM SERIES

### V Bottom Bag Making Machine

Prakash Grocery paper bag making machine is a revolutionary machine, which is mastered to produce finest quality paper bag with or without side gusset. With V-cut at the bottom of the paper bag, it is the most economical type of paper bag that can be produced. These paper bags can be produced in different size and have got wide usage in groceries, packing, confectionary, food stuff, tea powder, and medical field.

#### FEATURES

##### FULLY AUTOMATIC AND HIGH SPEED

Machine is fully automatic and runs at high speed of 400 bags per minute with 4 rotating blades. This translates into high production with minimum manpower.

##### AUTOMATIC BRAKING SYSTEM

Automatic tension control system is provided with pneumatic disc brake at unwind unit. This helps in maintaining flow of paper to the machine and tension is automatically adjusted with varying reel diameter.

##### PNEUMATIC REEL LIFTING SYSTEM

Machine is equipped with pneumatic reel lifting to ease the operation and better roll handling.

##### GUSSET ADJUSTMENT

Both side gusset can be adjusted in tandem from one knob. This helps the operator to adjust gusset depth on the run with precision.

##### COUNTERS

Total production counter, settable batch counter, drive counter are all available at one place at operating side

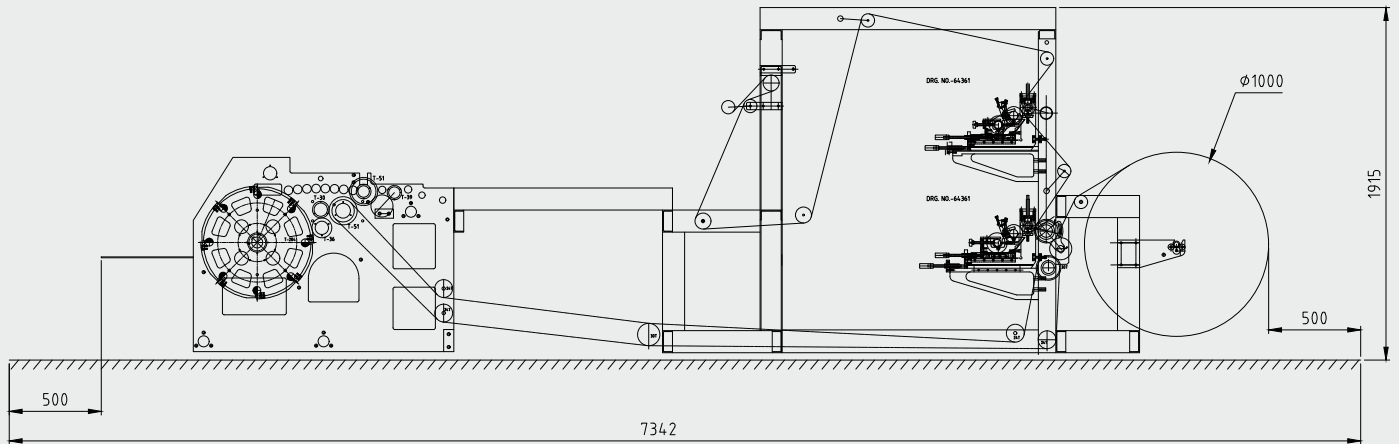
##### SPECIAL DESIGN OF SIZE PLATE

Size plate for tube formation is of unique design and radius, which enables high speed production, less breakdowns and quick size changeovers.

# P3M2C1517

FULLY AUTOMATIC AND HIGH SPEED

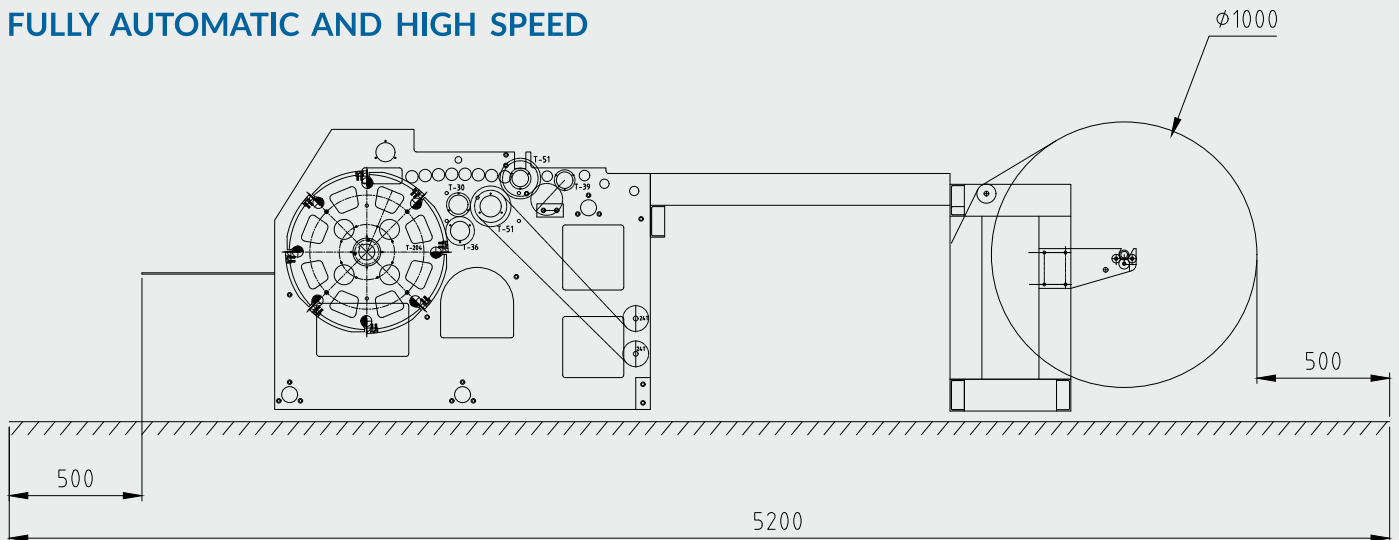
Machine is fully automatic and runs at high speed of 400 bags per minute with 4 rotating blades. This translates into high production with minimum manpower.



LAYOUT OF BAG MAKING MACHINE 15" X 17" 2C

# P3M1517

FULLY AUTOMATIC AND HIGH SPEED



LAYOUT OF BAG MAKING MACHINE 15" X 17"



**PRAKASH**



# PBM 2C1517

## FULLY AUTOMATIC AND HIGH SPEED

Machine is fully automatic and runs at high speed of 400 bags per minute with 4 rotating blades. This translates into high production with minimum manpower.

## OPTIONS

Single or multicolour Flexographic printing units.

PLC and touchscreen based system.

Servo control motor for higher speed and accuracy.

Hot melt glue attachment for better bag quality and durability.

High speed servo puncturing system.

# PRINTING SECTION

Available in 2 and 4 colour flexo printing units.

Ink wipers for zero ink spilling.

Chain drive for zero backlash.

1/8 CP fine pitch gears for high print quality.

Hot air drying provided as an option.

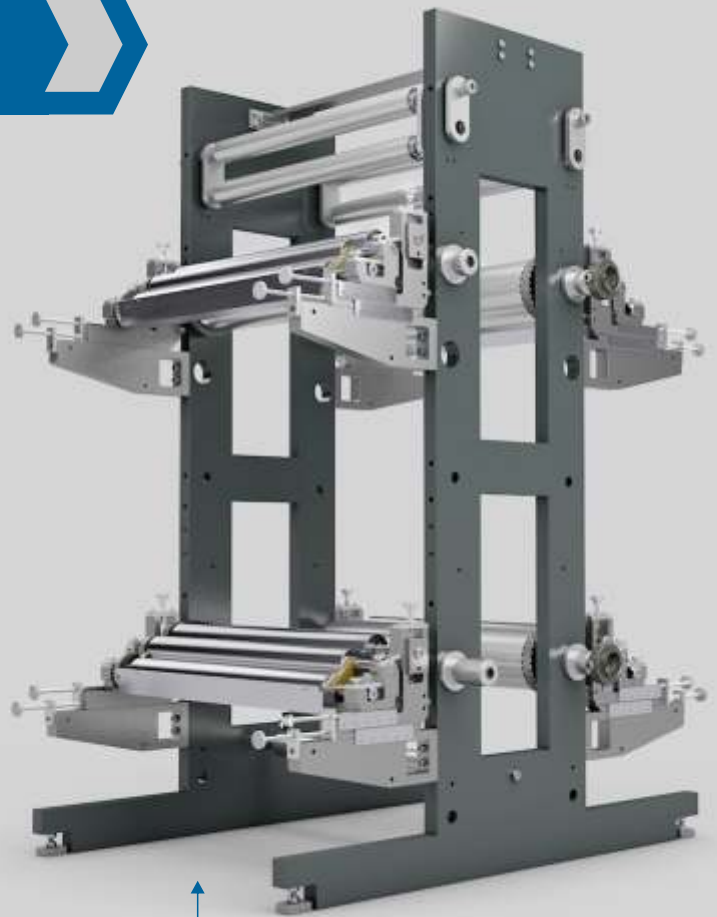
Stainless steel ink trays for corrosion resistance.

Latest technology of Top Loading of rollers. Quick changeover of few minutes.

Paper compensation in between print units for on the run timing setting.

Super fine quality Anilox roller with LPI based on customer demand.

Roller setting based on gauges. Entire print section can be set in 10 minutes.



↑  
**4 COLOUR**

→ **PRINTING SECTION**



← **2 COLOUR**

# TUBE FORMATION SECTION



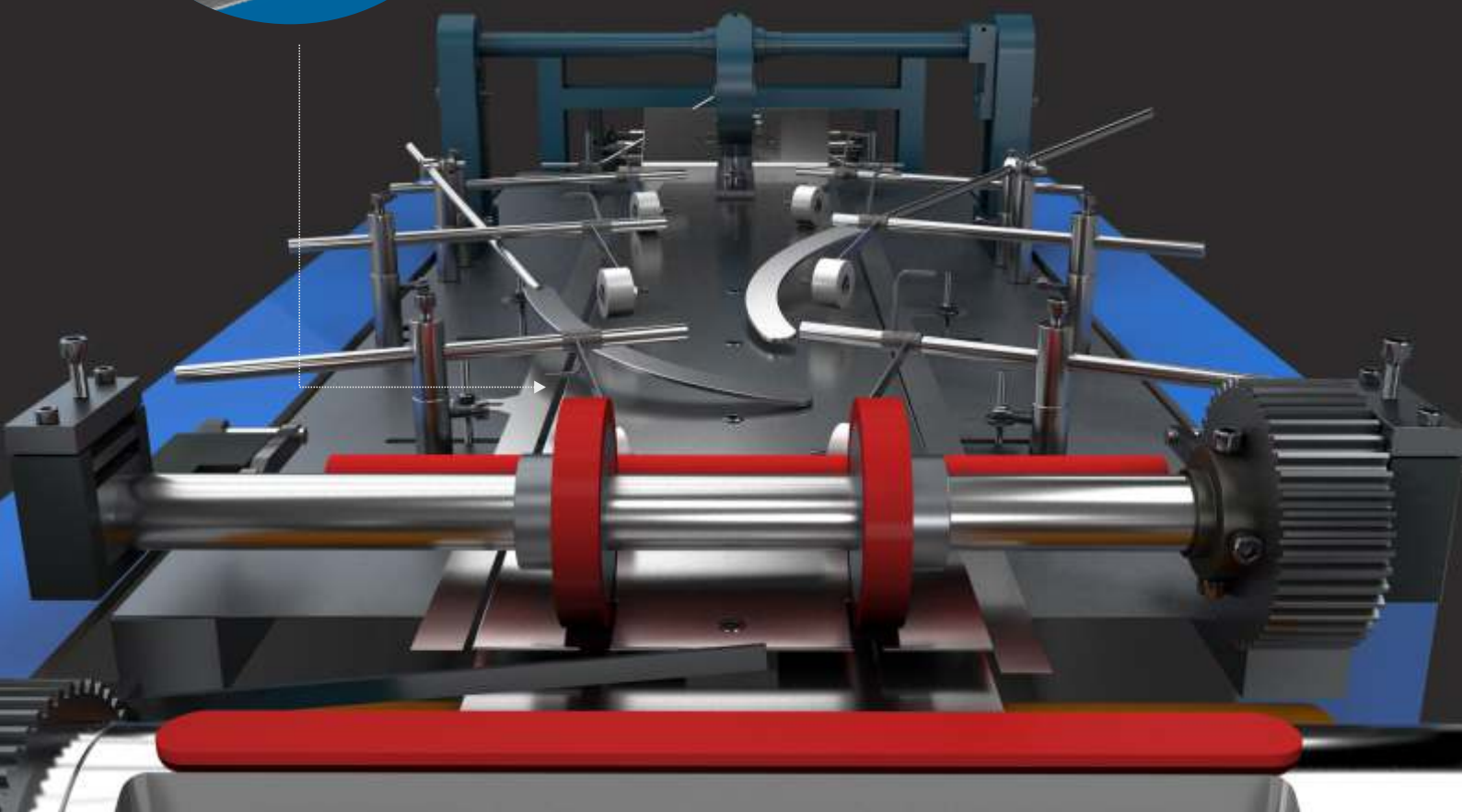
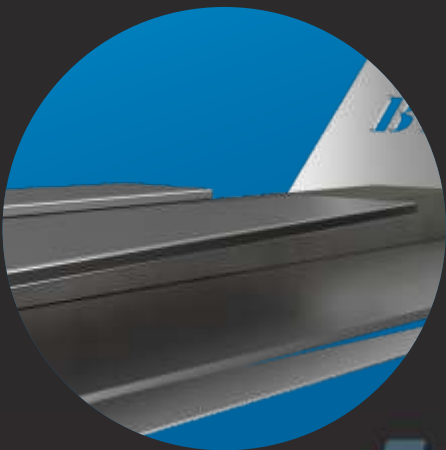
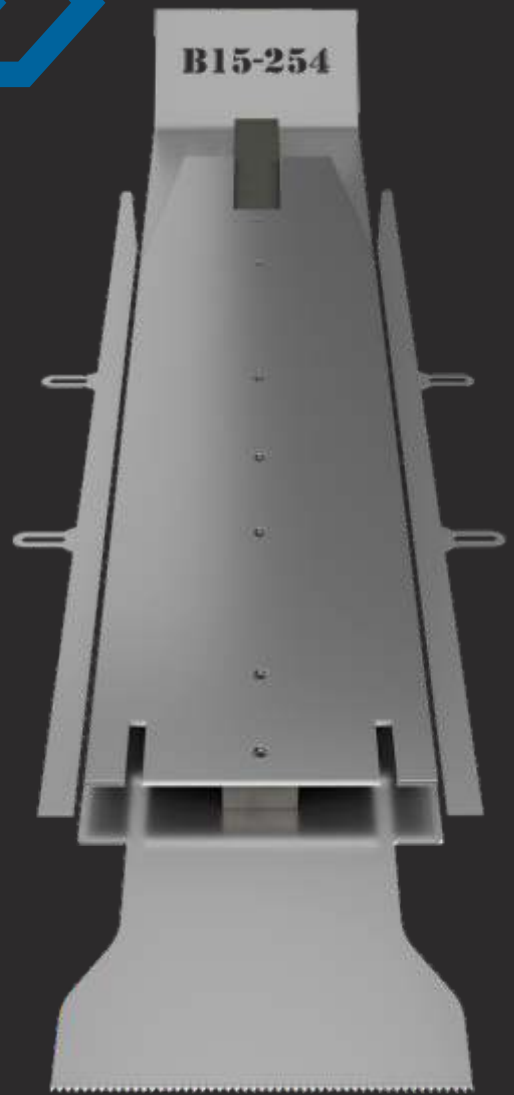
Laser cut size plate for precision and smooth tube formation.

Size plate mounting bracket comes with liner and cross setting options.

Chrome plated size plate for long life and corrosion.

Side pasting available as an option & On the run gusset size adjustment.

Size plate provided as a complete set with top and bottom plate, cutting knife and glue strip for really quick bag size changeover resistance.



# REEL STAND

Prakash offers a sturdy and a dedicated reel stand for paper reels. Made with steel, reel stand offers several advantages. Reel stand is built such a way that it can serve both purposes of center passing or side passing. It is built with solid steel, which means it is rugged and heavy duty giving a long life.



## BRAKE SYSTEM

Pneumatic disk brake system for auto tension control.



## AIR SHAFT

Pneumatic air shaft for quick reel change.

## REEL LIFTER

Pneumatic reel lifter system for easy reel loading.



## DANCER

Advance reel shock absorb system for smooth paper feeding.



# CUTTING AND BAG COLLECTION SECTION



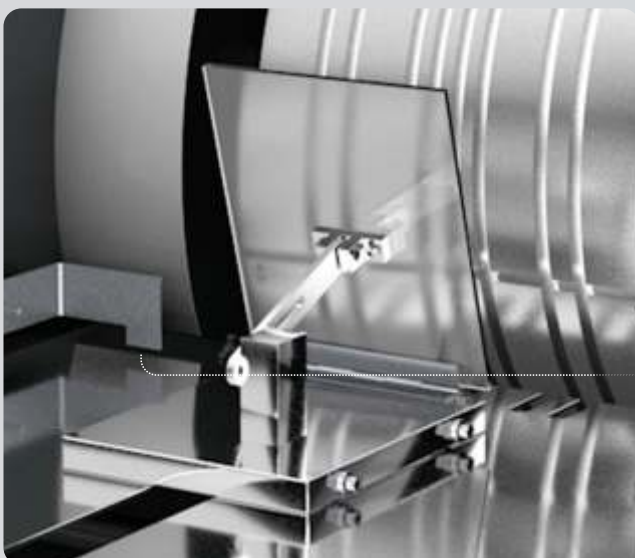
Super fine High Carbon, High Chromium cutting knife for long life and smooth cutting.

4 nos. flying knife for high speed and high production.

Counter system for total bag count and batch counter.

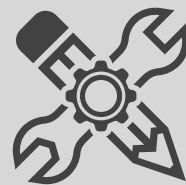
Dynamically balanced, high grade alloy steel main collection drum for vibration & maintenance free operations.

2 minute change gear mechanism for bag length change.



Kicker system for bag bundle batching.

# TECHNICAL SPECIFICATION



Specifications	PBM 1117 (11")	PBM 1517 (15")	PBM 1824 (18")
Cutting Length (C)	125 - 450 MM	125 - 450 MM	135 - 615 MM
Bag Length (H)	120 - 445 MM	120 - 445 MM	130 - 610 MM
Bag Width (L)	100-280 MM	100-380 MM	100-450 MM
Gusset	0-100 MM	0-140 MM	0-165 MM
Standard Flap (P)	12-20 MM	12-20 MM	12-20 MM
Max Speed	400 Pcs/Min	400 Pcs/Min	400 Pcs/Min
Paper Thickness	40-80 GSM	40-80 GSM	40-120 GSM
Paper Roll Width	220-840 MM	220-1070 MM	220-1260 MM
Max Roll Diameter	1000 MM	1000 MM	1000 MM
Total Power	3 KW	3.5 KW	5 KW
Plate Thickness	2.84 MM	2.84 MM	2.84 MM
Overall Dimension	4500 x 1600 x 1600 MM	5000 x 1850 x 1600 MM	5000 x 2440 x 1700 MM
Weight of Machine	2500 KGS	3000 KGS	4800 KGS

▼  
**ANILOX ROLLER  
LPI AS PER BUYER  
DEMAND**

## TERMS & CONDITIONS

### TERMS OF PAYMENTS

30% earnest deposit, non refundable at the time of placing the order along with confirmed purchase order and balance before dispatch.

### INSTALLATION AND TRAINING

The above price is inclusive of complete mechanical erection and electrical installation as well as commissioning, however airfares, Lodging & Boarding arrangements for the engineers to be arranged and borne by the customer and per day pocket expense of \$50 per engineer will be in buyer scope. Local help, crane, forklift, etc will be arranged by the buyer.

## **DELIVERY TIME & FREIGHT**

Delivery will start in approximately 60 days after receipt of earnest deposit or as discussed & freight in customer scope.

## **WARRANTY**

Prakash warrants the agreed performance and quality parameters and that the machine is free of manufacturing and assembly defects and, thus, the complete serviceability of the machine for a period of 12 months from the date of dispatch.

Prakash will not be liable under the warranty if the machine is used improperly, shifted or sold, if the maintenance and cleaning instructions are not complied with and if the machine is modified in any way without the prior consent of Prakash. No rubber parts, electrical, consumables are not covered under warranty.

## **Force Majeure**

We will not be responsible for any delay in delivery or for non-delivery of our product by reason of force majeure, such as acts of God, War, Riots, Civil Disturbances, Acts of Authorities, Strikes, Lockouts or other labour difficulties or any other circumstances beyond our control which might affect us or our suppliers and hinder impede or prevent deliveries. We will send the notice of force majeure to the customer in writing.

## **DELIVERY TIME & FREIGHT**

Any dispute or differences whatsoever arising between the parties, out of our relating to the construction, meaning or operation or effect of this contract or the breach thereof shall be settled by Arbitration in accordance with the rules of Arbitration of Delhi High court, Delhi with arbitration seat in Delhi by the arbitrator of seller's choice and the award made in pursuance thereof shall be binding on the parties.

## **FORFEITURE CLAUSE**

On receipt of your advance, we will immediately start procurement of material. components paying non-refundable payment to our overseas, domestic vendors to manufacture your ordered machine. Therefore, in the event of cancellation of order from your side, the advance amount will be forfeited irrespective of the reason whatsoever.

## **OTHER CHARGES**

Any other taxes, charges, expenses not mentioned above will be in customer scope.

**PRAKASH WEB OFFSET PVT. LTD.**

Plot no. 268,269,270 Sector 58, Faridabad 121004 Haryana, India.  
info@prakashoffset.com | www.prakashoffset.com  
24X7 Help Line - +91 82875 55666 | 95997 55114